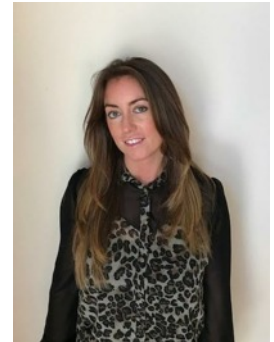




Specialist Leader of Education (SLE) pen portrait



Kate Doyle – Nursery Teacher at Everton Nursery School and Family Centre, Liverpool

Specialist areas:

- Early Years (Mathematics and Forest School)
- Assessment
- Leadership of Continuing Professional Development CPD
- Leadership of Initial Teacher Training (ITT)

Kate's work experience:

Kate is part of the school's leadership team and teaches her own class of children. Kate is Forest School trained and has a passion for outdoor learning and creative learning experiences. Kate leads whole school mathematics within her role as subject coordinator and works in partnership with the Headteacher to lead whole school assessment.

Kate undertakes other roles and responsibilities that include:

- lead for curriculum learning and teaching;
- lead for project-based self evaluation;
- lead for identified staff performance management/appraisal;
- lead for planning, leading and monitoring school improvement.

Kate has significant experience within and across teaching and leadership of Early Years and was appointed as a Specialist Leader of Education (SLE) through the National College for Teaching and Leadership (NCTL) in November 2016. Kate has facilitated Early Years practitioner training sessions as part of the 'Outstanding Teacher Series' on behalf of North Liverpool Teaching School, provided CDP training for ITT school direct trainee students and delivered workshop sessions at Everton Nursery School and Family Centre's annual Early Years conference.